

Dances for Four People

Montarde Bransle

A – All take hands. Go four Doubles to the left, following the leader around the room.

B – First person turns in place with 4 kicks. Second does likewise, and so on.

A – Repeat the four Doubles to the left while the first person weaves between the others to the end of the line (starting in front of the 2nd person and going under the arms).

Bransle de Montarde

Claude Gervaise

The musical notation for 'Bransle de Montarde' consists of three staves in 4/4 time, key of B-flat major. The first staff has a first ending bracket over the final four measures. The second staff has a second ending bracket over the first four measures, followed by a repeat sign and then the final four measures. The third staff also has a first ending bracket over the first four measures and a second ending bracket over the final four measures.

Rufty Tufty

I. A - Take hands, Double forward (toward Opposite) and back. Repeat.

B - Set and Turn Single (to your Partner). Repeat.

C1 - Take Partner's hand and lead out a Double. Turn around, switch hands, and Double back. Turn Single.

C2 - Take Opposite's hand and do the same.

Rufty Tufty

II. A - Side Right with your Partner.
Side Left with your Partner.

B - As in Part I.

C - As in Part I.

The musical notation for 'Rufty Tufty' consists of three staves in 4/4 time, key of G major. The first staff is labeled '3x AABCC' and includes guitar chords D, G, A7, and first/second endings for D. The second staff includes guitar chords G, D7, G, (Am), D7, G, G. The third staff includes guitar chords C, G(D7), G, C, G(D7), G, C, D7, G.

III. A - Arm right with Partner.
Arm left with Partner.

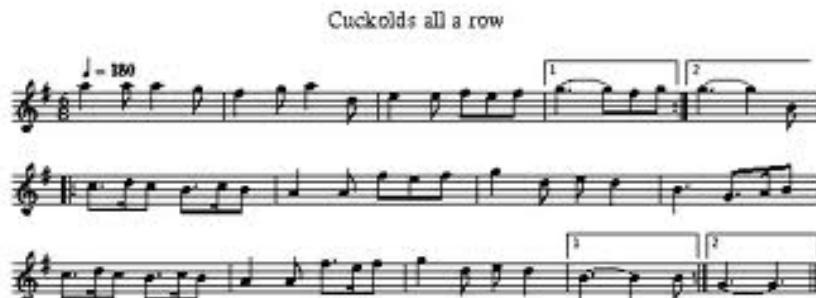
B - As in Part I.

C - As in Part I.

Cuckolds All a Row

- I. A - Partners lead up a Double toward the Opposite couple and fall back a Double. That again.
 B1 - Go Back-to-Back around your Opposite. Then gipsy around your Opposite (like back-to-back, but maintaining eye contact).
 B2 - The same with your Partner.

- II. A - Side right with your Partner.
 Side left with your Opposite.
 B1 - Men change places. Women change places. All take hands and go halfway round to your places.
 B2 - Women change places. Men change places. All go halfway round again.



- III. A - Arm right with Partner.
 Arm left with Opposite.
 B1 - Men put back your Opposite a Double, then fall back a Double to the right on the other side. Men cast off to the right, the Women following, going around until you come to the same place again.
 B2 - Men put back your Opposite a Double, falling back onto your own side. Men cast off to the left, the Women following, until you come to your original places again.

Anello

- I. A - Starting proper, go 8 *Saltarello* steps forward. On the last step, 1st Couple turn to face the 2nd Couple.
 B1 - Men *Movimento*. Ladies *Movimento*. Men change places with two *Saltarello* steps, turning to face each other.
 B2 - Ladies *Movimento*. Men *Movimento*. Ladies change places the same way.
 C1 - Men *Movimento*. Ladies *Movimento*. Men turn in place.
 C2 - Ladies *Movimento*. Men *Movimento*. Ladies turn in place.
 D - Men go behind Ladies with four *Pive*. Ladies do the same behind their Partners.
 E - Men *Movimento*. Ladies *Movimento*. Men repeat. Ladies repeat. 1st Couple turn back into place
- II. Repeat, with the Ladies going first throughout.

